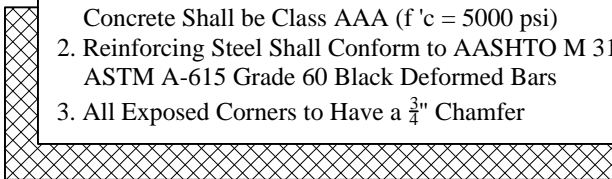


Est Weight: 13,600 Lbs

**General Notes**

1. Precast Concrete Shall Conform to AASHTO M 199. Concrete Shall be Class AAA ( $f'c = 5000$  psi)
2. Reinforcing Steel Shall Conform to AASHTO M 31, ASTM A-615 Grade 60 Black Deformed Bars
3. All Exposed Corners to Have a  $\frac{3}{4}$ " Chamfer



Not to Scale

Phoenix  
Precast  
Products

Dual 18" RCP  
Winged Headwall  
with Base

P/N: HWW-D18B